

# Burkina Faso

2016 population

18.6M

2016 per capita GDP

\$1,595

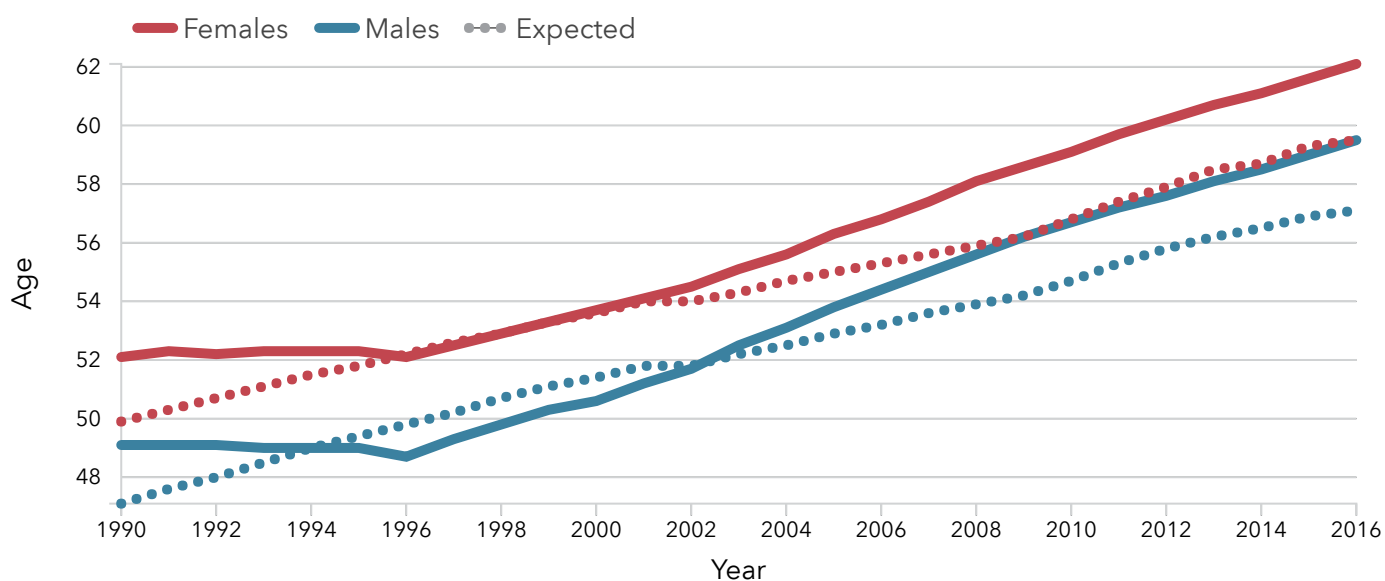
2016 fertility rate

5.4

2016 educational attainment (years)

2.1

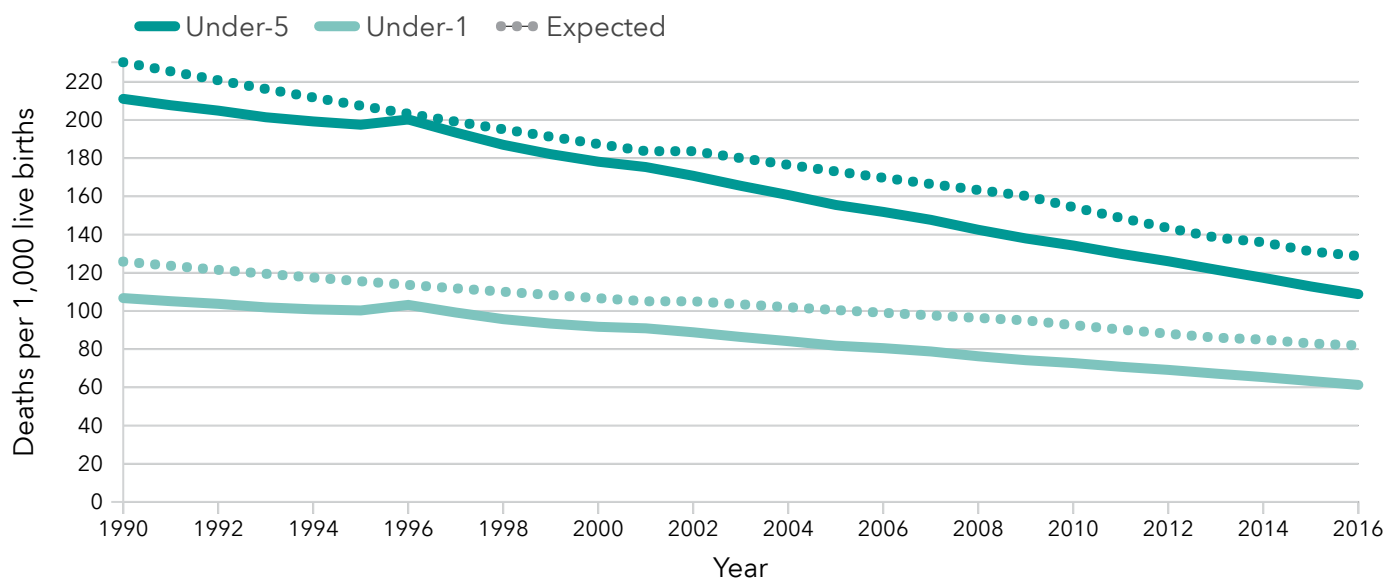
## How long do people live?



	Expected		Observed	
	1990	2016	1990	2016
Females	49.9	59.5	52.1	62.1
Males	47.1	57.1	49.1	59.5

Life expectancy, 1990-2016

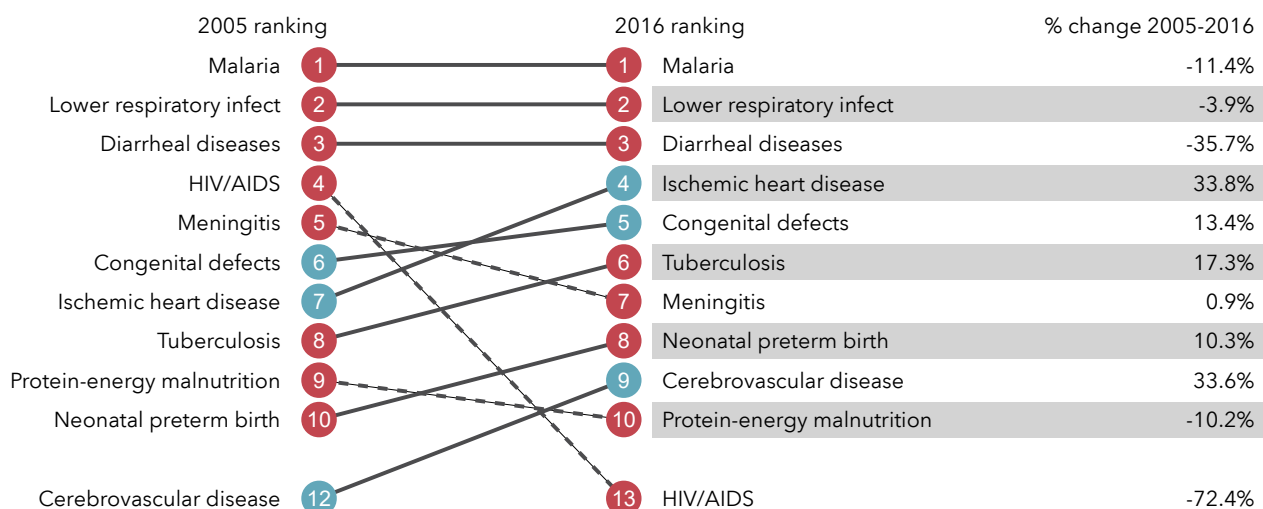
# What is the mortality trend in the under-5 and under-1 age groups?



	Expected		Observed	
	1990	2016	1990	2016
Under-5	230.2	128.8	211.1	108.8
Under-1	125.8	81.9	106.7	61.3

Child mortality, 1990-2016

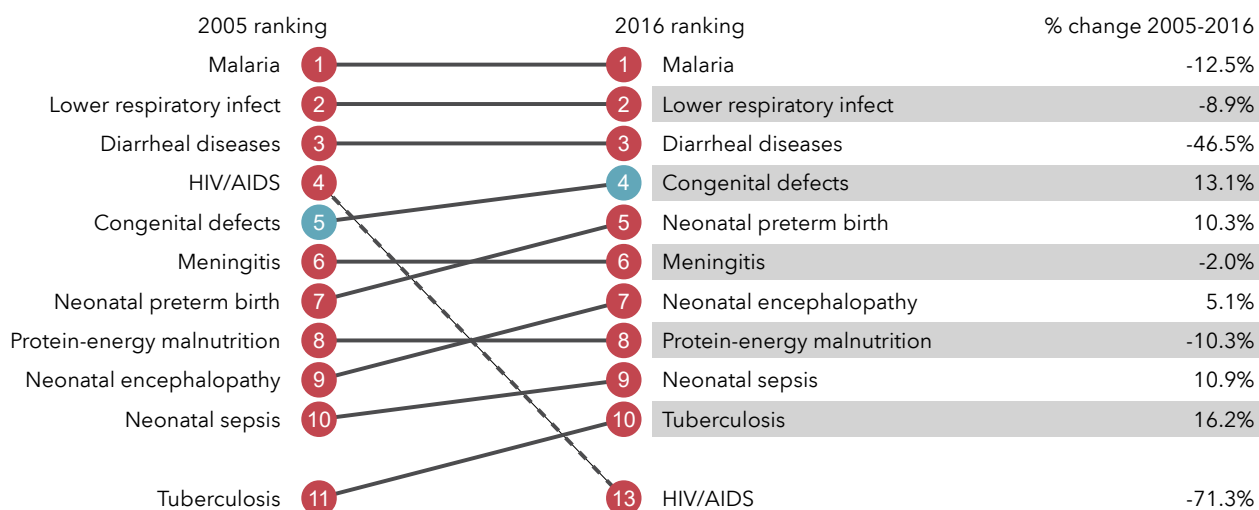
## What causes the most deaths?



Top 10 causes of death in 2016 and percent change, 2005-2016, all ages, number

# What causes the most premature death?

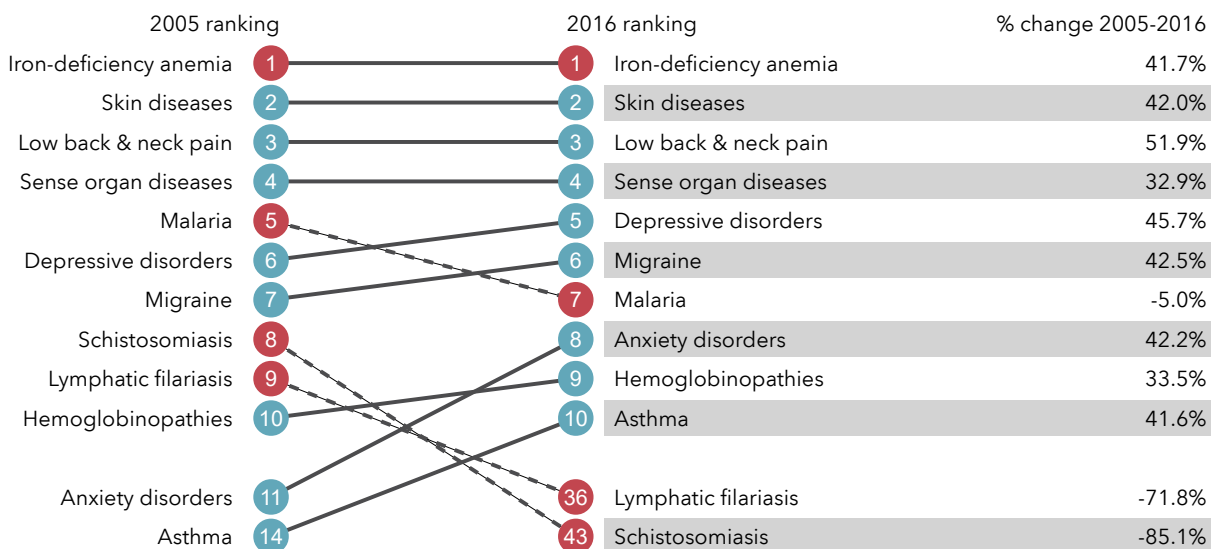
- Communicable, maternal, neonatal, and nutritional diseases
- Non-communicable diseases
- Injuries



Top 10 causes of years of life lost (YLLs) in 2016 and percent change, 2005-2016, all ages, number

# What health problems cause the most disability?

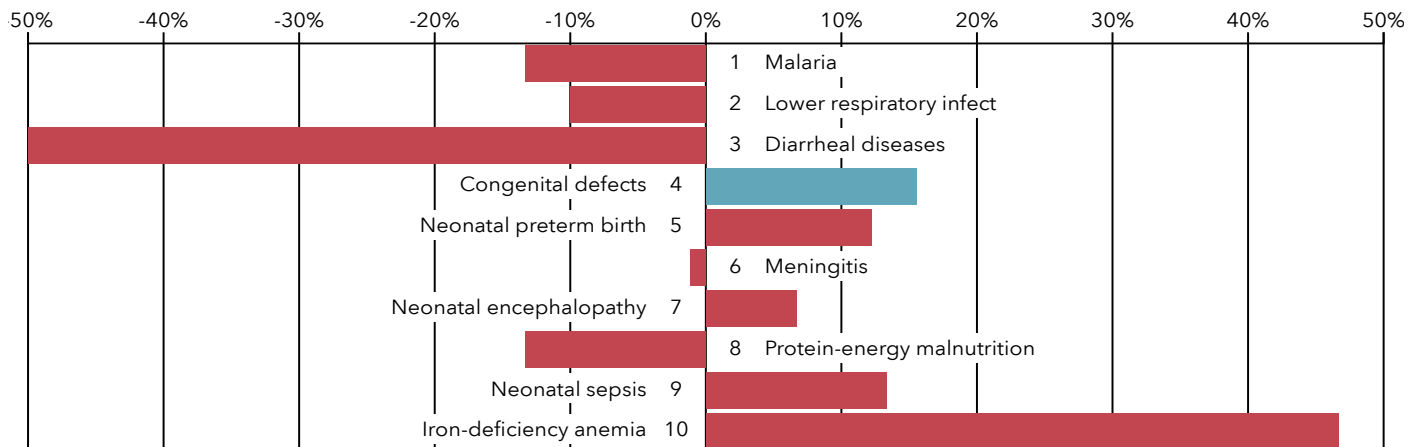
- Communicable, maternal, neonatal, and nutritional diseases
- Non-communicable diseases
- Injuries



Top 10 causes of years lived with disability (YLDs) in 2016 and percent change, 2005-2016, all ages, number

# What causes the most death and disability combined?

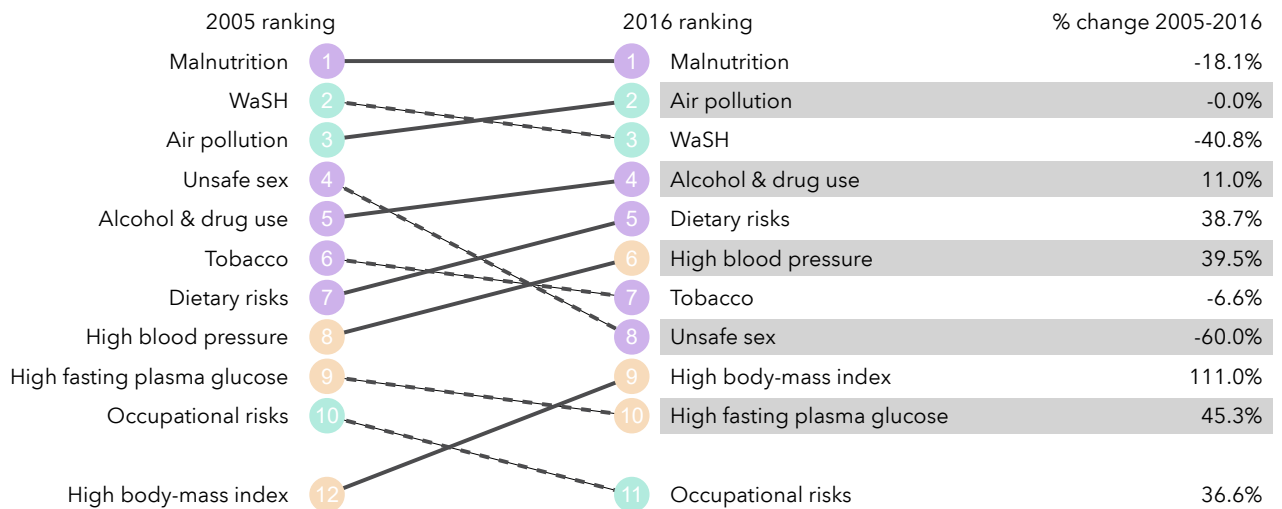
- Communicable, maternal, neonatal, and nutritional diseases
- Non-communicable diseases
- Injuries



Top 10 causes of disability-adjusted life years (DALYs) in 2016 and percent change, 2005-2016, all ages, number

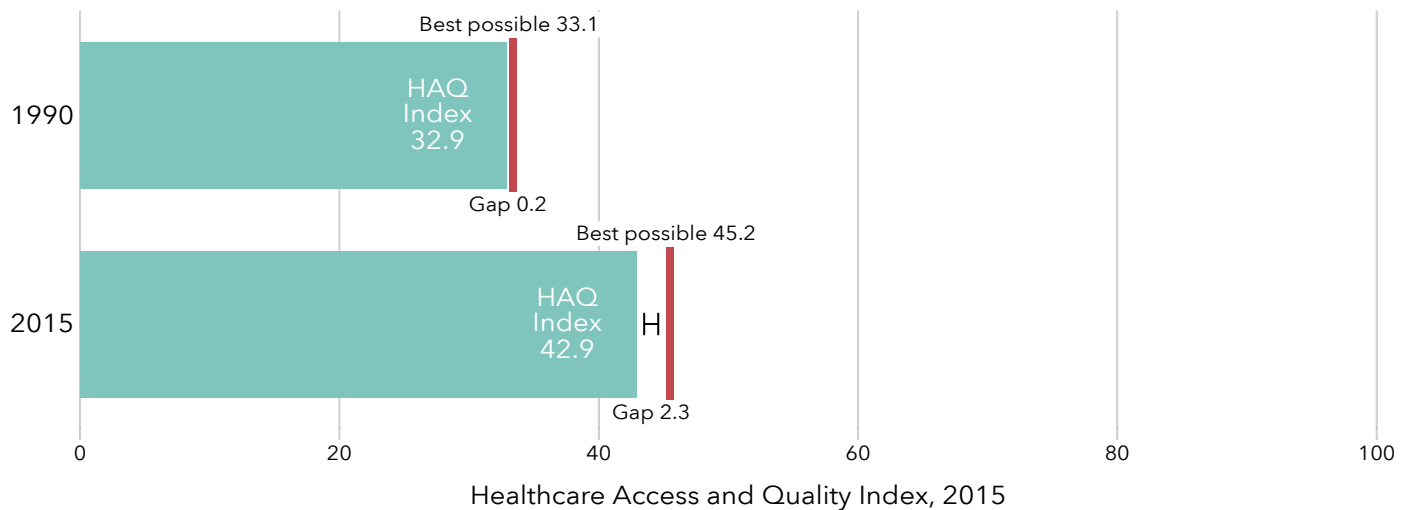
# What risk factors drive the most death and disability combined?

- Metabolic risks
- Environmental/occupational risks
- Behavioral risks



Top 10 risks contributing to DALYs in 2016 and percent change, 2005-2016, all ages, number

# How does personal healthcare access and quality measure up against what is considered "best possible"?



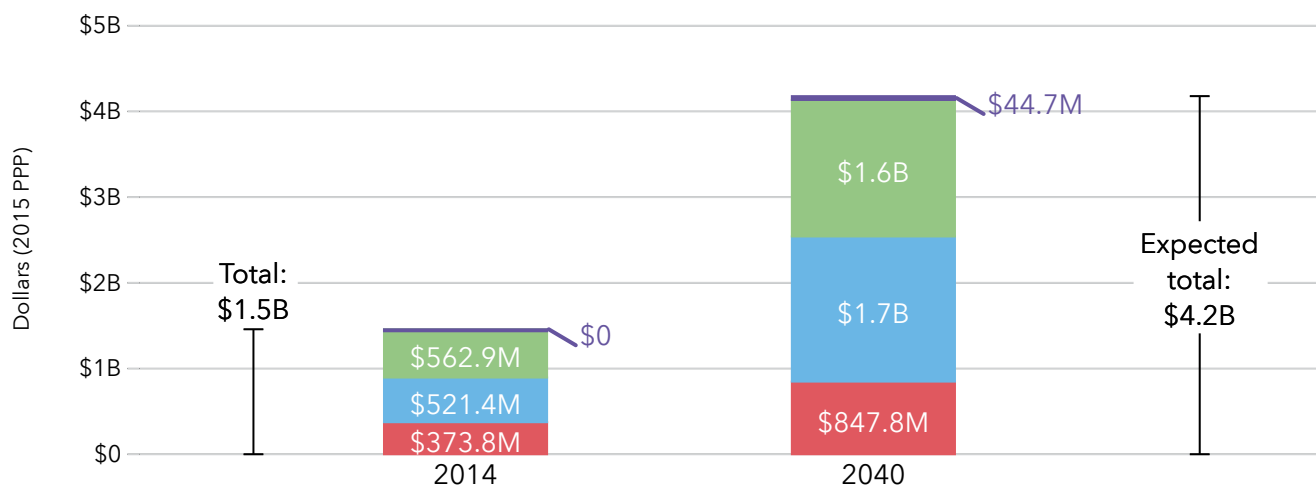
Source: [bit.ly/amenable-mortality](http://bit.ly/amenable-mortality)

The Healthcare Access and Quality (HAQ) Index provides a summary measure of personal healthcare access and quality on a scale from 0 (lowest) to 100 (highest). This measure is based on risk-standardized mortality rates from causes that, in the presence of high-quality healthcare, should not result in death.

"Best possible" represents the highest personal healthcare and access achieved at a given level of development. The gap between the HAQ Index and "best possible" represents how much untapped potential exists for improving personal healthcare access and quality given a location's resources and development status.

# How much is spent on health -- now, and in the future -- and from which sources?

- Prepaid private spending
- Out-of-pocket spending
- Government health spending
- Development assistance for health



Source: [Financing Global Health Database 2016](#)

PPP = purchasing power parity

"Expected" is the future growth trajectory based on past growth.

"Potential" reflects what may be possible based on spending patterns of countries that spend the most on health.

# How do causes of premature death compare to those in other

# How do causes of premature death compare to those in other locations?

This table shows the top 10 causes of premature mortality (YLLs). It can be used to compare YLLs across locations relative to the group average. Comparison groups were chosen based on the GBD regional classifications, known trade partnerships, and socio-demographic indicators.

	Malaria	Lower respiratory infect	Diarrheal diseases	Ischemic heart disease	Tuberculosis	Cerebrovascular disease	Meningitis	Congenital defects	Neonatal preterm birth	Protein-energy malnutrition
Burkina Faso	8,310.0	4,538.6	3,156.7	2,680.6	2,155.8	1,591.3	1,513.9	1,455.3	1,115.4	1,115.0
Comparison group mean (Low SDI)	2,266.9	3,178.3	3,107.1	3,245.3	2,512.9	2,183.9	893.0	686.3	988.3	924.0
Haiti	4.5	2,257.8	1,854.3	4,662.1	548.3	3,453.7	559.8	1,019.0	607.8	393.9
Kiribati	0.0	2,033.6	1,326.6	4,542.7	1,793.2	4,431.8	764.4	1,159.5	1,147.1	831.1
Malawi	2,562.8	3,558.4	3,224.0	2,166.8	2,218.2	1,550.1	1,092.5	279.2	982.0	1,149.8
Mozambique	3,067.2	3,025.5	1,765.9	1,868.7	3,465.0	2,216.9	793.8	291.5	877.8	626.4
Papua New Guinea	610.1	3,828.7	1,426.0	5,988.1	275.8	4,455.8	401.5	980.7	1,015.1	294.9
Rwanda	1,068.2	3,112.3	1,979.8	1,399.8	2,270.7	1,407.4	831.2	260.7	673.8	998.9
Senegal	1,085.8	2,783.5	2,366.7	3,140.2	1,890.7	1,969.9	1,092.6	910.2	940.4	482.1
Sierra Leone	6,873.9	5,166.2	5,079.5	3,411.0	2,131.9	2,403.9	1,546.6	1,781.8	1,269.3	838.6
Solomon Islands	143.3	2,175.3	641.9	6,400.4	693.6	4,954.6	174.9	706.4	662.2	209.9
Togo	5,285.5	3,379.9	2,261.2	3,314.1	1,714.3	2,257.9	881.4	977.2	1,127.6	451.1

■ Significantly lower than mean     
 ■ Statistically indistinguishable from mean     
 ■ Significantly higher than mean

Age-standardized rate per 100,000, 2016

# How do causes of death and disability compare to those in other locations?

This table shows the top 10 causes of death and disability (DALYs). It can be used to compare DALYs across locations relative to the group average. Comparison groups were chosen based on the GBD regional classifications, known trade partnerships, and socio-demographic indicators.

	Malaria	Lower respi infect	Diarrheal disea	Ischemic he- disease	Tuberculosis	Cerebrovasc- disease	Congenital de	Meningitis	Low back & pain	Iron-deficien anemia
Burkina Faso	8,629.6	4,547.6	3,346.6	2,760.9	2,197.1	1,691.8	1,612.0	1,565.9	1,309.8	1,258.2
Comparison group mean (Low SDI)	2,372.0	3,187.8	3,296.7	3,339.5	2,565.5	2,292.3	846.0	941.0	1,171.4	802.1
Haiti	5.9	2,268.1	2,036.8	4,765.8	557.9	3,567.2	1,137.5	571.4	964.0	836.6
Kiribati	0.0	2,045.4	1,519.0	4,625.9	1,884.4	4,675.2	1,283.9	799.9	1,138.8	718.5
Malawi	2,712.2	3,568.4	3,419.6	2,279.2	2,255.1	1,637.1	415.6	1,143.9	1,194.8	652.5
Mozambique	3,263.2	3,033.5	1,909.7	1,972.2	3,519.3	2,312.5	430.9	845.4	1,182.9	879.5
Papua New Guinea	646.4	3,841.0	1,642.4	6,076.2	307.0	4,699.2	1,109.2	436.1	1,230.7	694.0
Rwanda	1,209.2	3,121.9	2,150.4	1,475.4	2,312.9	1,482.7	392.1	882.3	1,165.0	184.7
Senegal	1,158.6	2,793.2	2,538.3	3,233.0	1,928.8	2,103.1	1,055.6	1,147.9	1,230.9	977.3
Sierra Leone	7,142.8	5,178.2	5,251.5	3,510.9	2,179.9	2,535.5	1,917.9	1,590.6	1,282.8	802.1
Solomon Islands	168.9	2,188.2	848.3	6,486.2	733.4	5,202.7	833.0	209.0	1,176.4	667.1
Togo	5,526.8	3,389.9	2,434.2	3,405.3	1,751.0	2,383.1	1,119.9	931.1	1,288.0	672.8

Significantly lower than mean

Statistically indistinguishable from mean

Significantly higher than mean

Age-standardized rate per 100,000, 2016